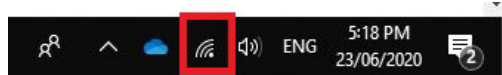
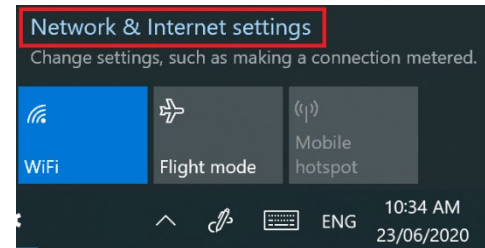


# Windows 10 - connect to TAFE NSW Wi-Fi

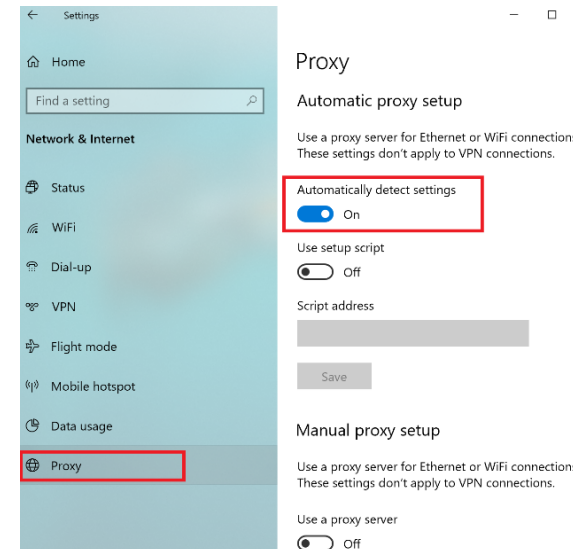
- 1 Click the **Network Connection** icon in the bottom right-hand corner.



- 2 Click on **Network & Internet** settings.



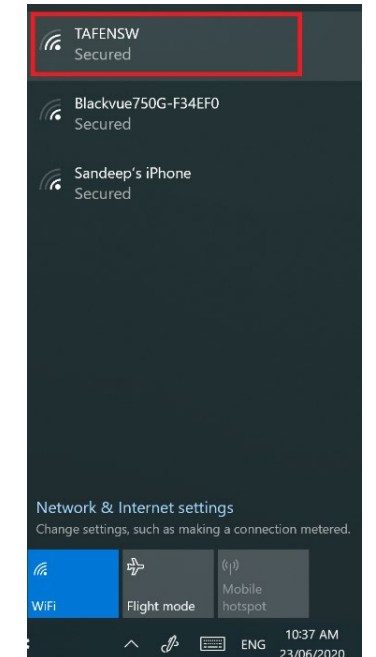
- 3 Click on **Proxy**, and check that **Automatically detect settings** is on, then close the window.



- 4 Click on the **Network Connection** icon in the bottom right-hand corner.

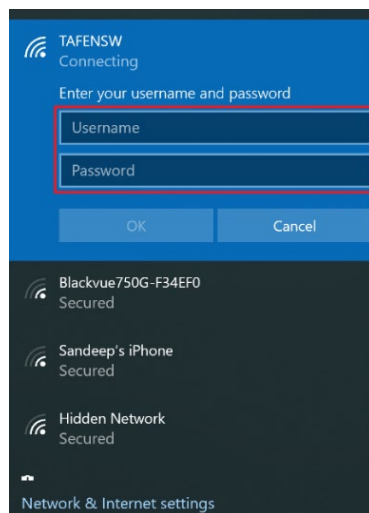


- 5 Click **TAFENSW**.

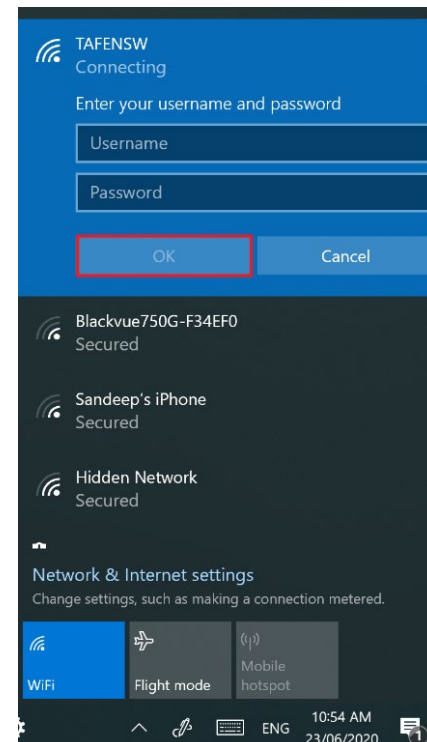


- 6 Type your **TAFE NSW email and password**.

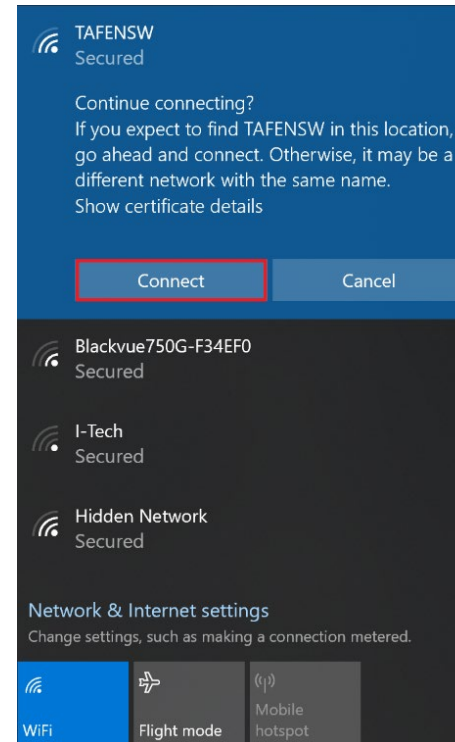
e.g.  
**firstname.lastname3@studytafensw.edu.au**  
 (student)  
**firstname.lastname@tafensw.edu.au**  
 (staff)



- 7 Click **OK**.



- 8 Click **Connect**.



- 9 If prompted, click **Continue connecting**.

You should now be connected to the TAFENSW Wi-Fi network.

- 10 To test this has worked, open your

- search engine (Google | Bing)

or

- web browser (Chrome | Firefox | Edge)

and type a search word.

Your search results should appear soon.

# Windows 10 - more help

If you have followed our instructions but still cannot connect to the Wi-Fi, try one or more of these:

## Forget the Network

Needed when you want to start again from scratch, or when you have changed your password.

- From the **Start** menu, click the cog icon to open the *Settings* app
- click on **Network & Internet**, then click on **Wi-Fi** in the left-hand menu
- on the right, click on **Manage known networks**
- click on **TAFENSW** network, and then click on the **Forget** button.

Now try to rejoin the network from scratch.

## Handy Hint

Are you using the correct format for your **TAFE NSW email**? Also, if you were given a number after your last name, remember to add it in. For example:

***firstname.lastname2@studytafensw.edu.au*** (students)

***firstname.lastname@tafensw.edu.au*** (staff)

## If using Firefox as your browser

On your Windows device, if using Firefox, you will need to configure the proxy in the browser.

Search for your version of Firefox on the Internet, to find specific instructions to configure your browser settings.

Or these instructions may work for some versions of Firefox:

- Select **Firefox tab** or **Tool icon**
- **Options**
- **Advanced**
- **Connection - Settings**
- tick ☒ the **Automatically detect settings** for this network.

## Still not working?

Get in touch with your local Library staff who may be able to assist **[tafensw.libguides.com/contacts](https://tafensw.libguides.com/contacts)**

or

try our *Support and FAQs* at **[tafensw.libguides.com/wifisupport](https://tafensw.libguides.com/wifisupport)**