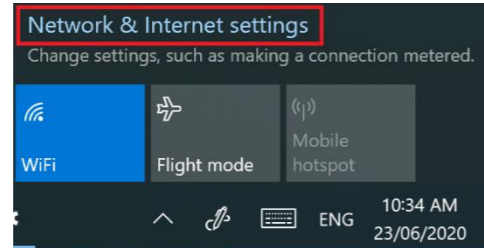


Windows 10 - connect to TAFE NSW Wi-Fi

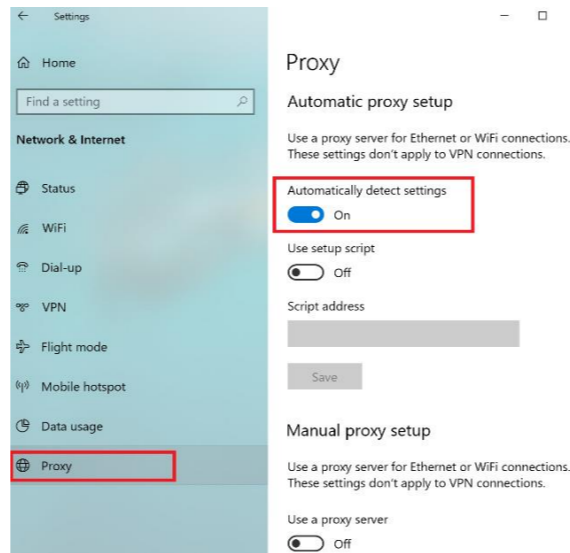
1 Click the **Network Connection** icon in the bottom right hand corner.



2 Click on **Network & Internet settings**.



3 Click on **Proxy**, and check that **Automatically detect settings** is on.



Close the window.

4 Click on the **Network Connection** icon in the bottom right hand corner.

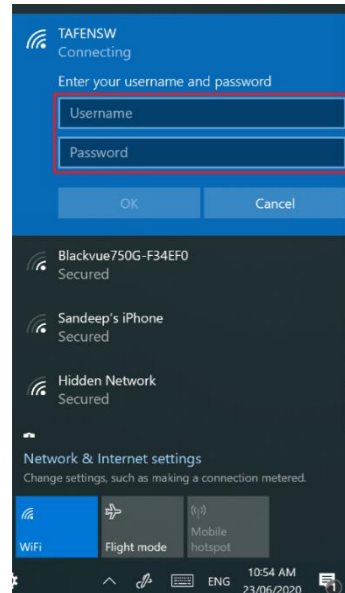


5 Click **TAFENSW**.

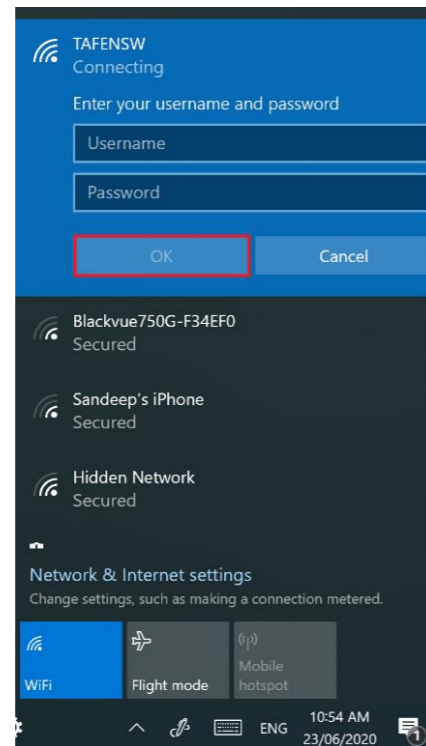


6 Type your **TAFE NSW** username and password.

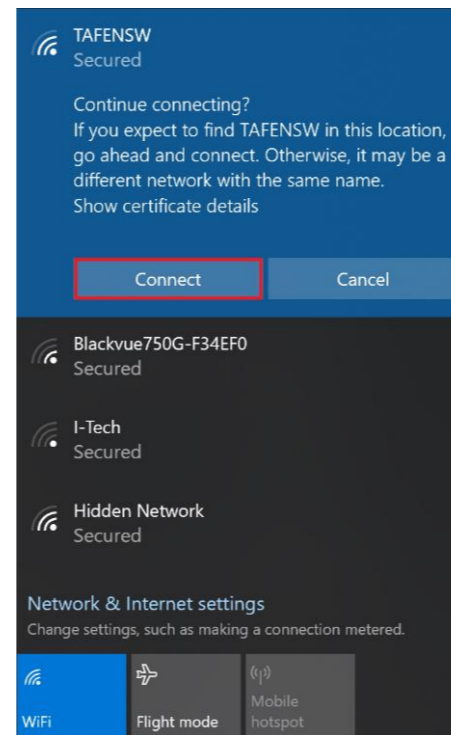
Format your **username** as **firstname.lastname** (example john.smith3)



7 Click **OK**.



8 Click **Connect** at the Windows Security Alert prompt.



9 If prompted, click **Continue connecting**

10 You should now be connected to the TAFENSW Wi-Fi network

11 To test this has worked,

open your search engine (Google/Bing)

or browser (Chrome/Firefox/Edge/Internet Explorer/)

and type a search word.

The results of the search should load correctly.

Windows 10 - more help

If you have followed our instructions but you still cannot connect to the Wi-Fi, try one or more of these:

Forget the Network

Needed when you want to start again from scratch, or when you have changed your password

Windows 10

- From the **Start** menu, click the cog icon to open the *Settings* app
- click on **Network & Internet**, then click on **Wi-Fi** in the left-hand menu
- on the right, click on **Manage known networks**
- click on **TAFENSW** network, and then click on the **Forget** button.

Now try to rejoin the network from scratch.

Windows 8

- See instructions at tafensw.libguides.com/wifisupport/windows

Change to Manual proxy

If the device does not connect, or says it is connected to the Wi-Fi but there is no internet, you need to set the proxy.

- Follow from step 1 to step 3 in the main instructions to arrive at the **Proxy** tab
- turn *off* **Automatically detect settings**
- under Manual proxy setup, turn *on* **Use a proxy server**
- type in the Address and Port **proxy.tafensw.edu.au 8080**
- click **save**.

If using Firefox as your browser

On your Windows device, if using Firefox, you will need to configure the proxy in the browser.

Search for your version of Firefox on the Internet, to find specific instructions to configure your browser settings.

Or these instructions may work for some versions of Firefox:

1. Select **Firefox tab** or **Tool icon**.
2. **Options**
3. **Advanced**
4. **Connection - Settings**
5. tick **Automatically detect settings** for this network.

Handy Hint

Username format - if the Wi-Fi symbol for the TAFE NSW Wi-Fi network doesn't appear when using the short version of *firstname.lastname2*, try adding the extension:

@studytafensw.edu.au for students

@tafensw.edu.au for staff

Still not working?

- Library staff may be able to help you to follow the instructions
- Try our *Support and FAQs* at tafensw.libguides.com/wifisupport