



# VIRTUAL DESKTOP GUIDE FOR STUDENTS (WINDOWS)

**INSTALL GUIDE**

PRESENTED BY  
SYSTEMS GROUP  
MAY 2022



**TAFE**NSW

# INTRODUCTION

TAFE NSW provides a Virtual Desktop Service for students



## REQUIREMENTS

- To be currently enrolled in TAFE NSW
- Know your TAFE NSW e-mail address, username and password
- A device running Windows 10

**IMPORTANT** As stated in the acceptable use of [information technology guideline](#), students should never knowingly import or download unlicensed or unauthorised software on TAFE NSW information assets and digital services

# **DOWNLOADING AND ACCESSING STUDENT VIRTUAL DESKTOP**

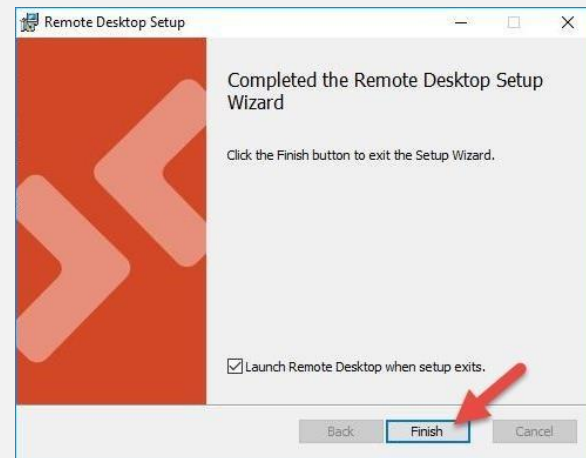
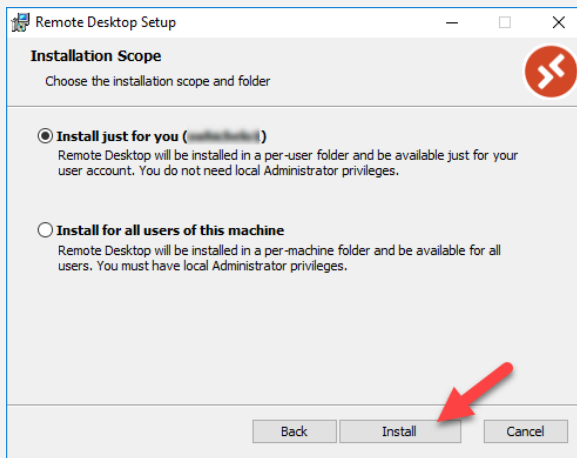
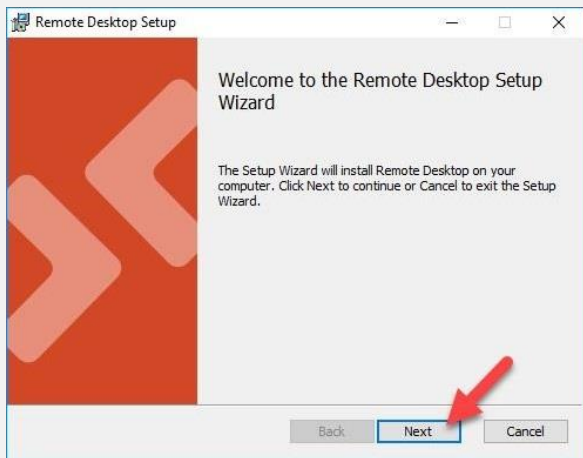


## Download the App here

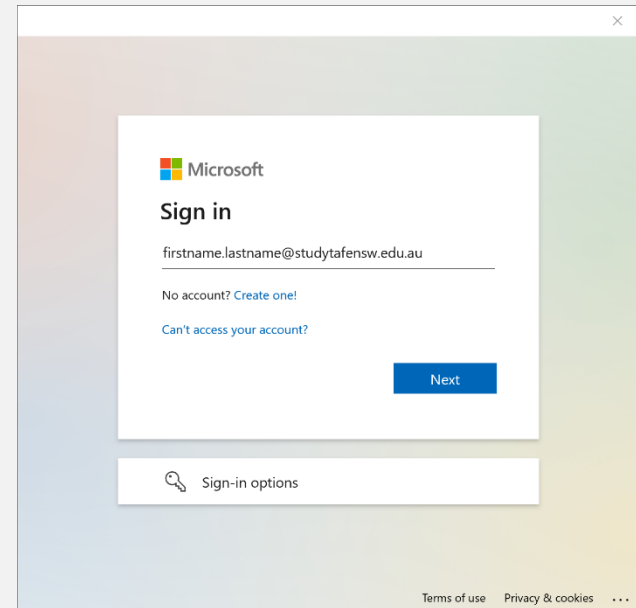
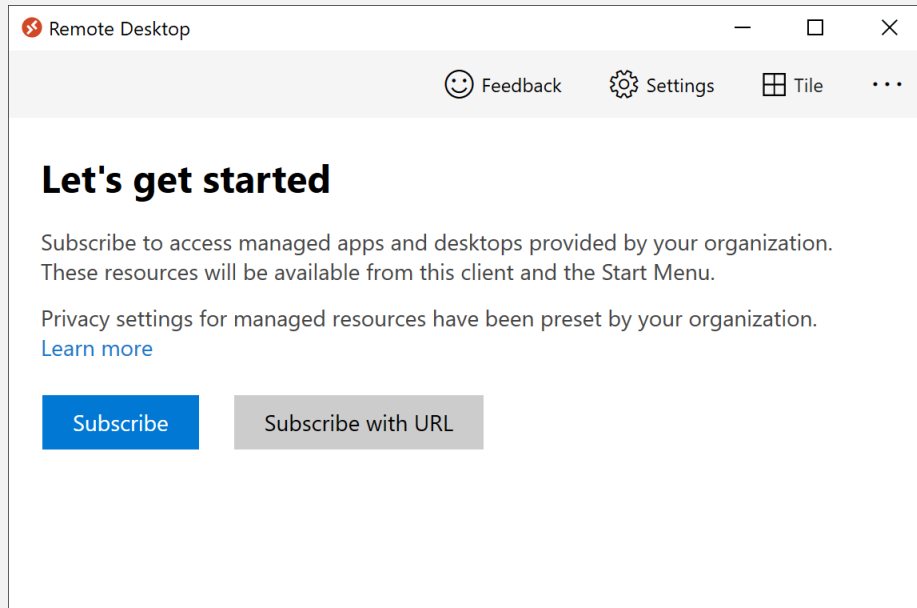
<https://go.microsoft.com/fwlink/?linkid=2068602>

Note: If you do not wish to install this software on your computer you can access the TAFE Virtual Desktop service through modern web browsers such as Chrome, Edge, Firefox or Safari. Please logon to the Student Portal and look for the link to the TAFE Virtual Desktop to use this option instead.

After Remote Desktop has downloaded, open the installer and follow the step by step instructions to install it.



After Remote Desktop has installed, Click Subscribe and sign in using your TAFE NSW provided e-mail. Click Next to continue.



Enter your TAFE NSW Username (e.g. jane.citizen1) and password before clicking “Log In”. Click Yes to continue.

### Sign in with your TAFE NSW account

User ID

Example: jane.citizen1

Password

[Log In](#)

**Forgot your password?**

---

Have trouble logging in?

**[Help for TAFE staff](#)** **[Help for TAFE students](#)**

Use this account everywhere on your device

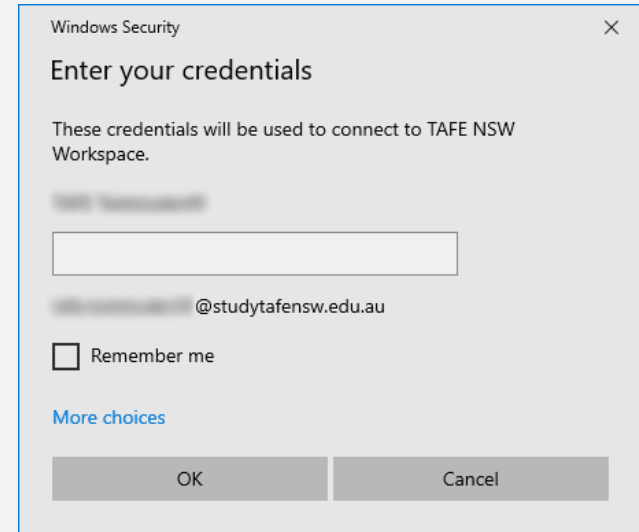
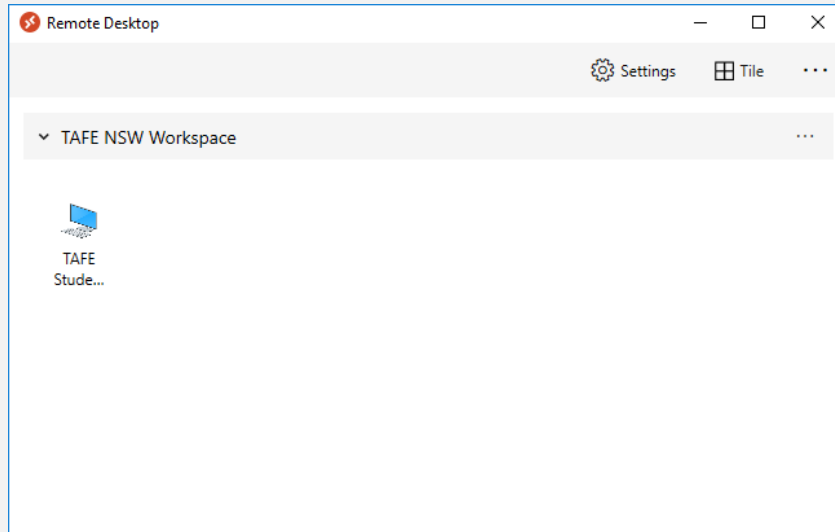
Windows will remember your account and make it easier to sign in to apps and websites. You won't have to enter your password each time you access your organization's resources. You may need to allow them to manage certain settings on your device.

Allow my organization to manage my device

This app only

[Yes](#)

Double click the TAFE Student Desktop icon and then enter your password. Click OK to continue.

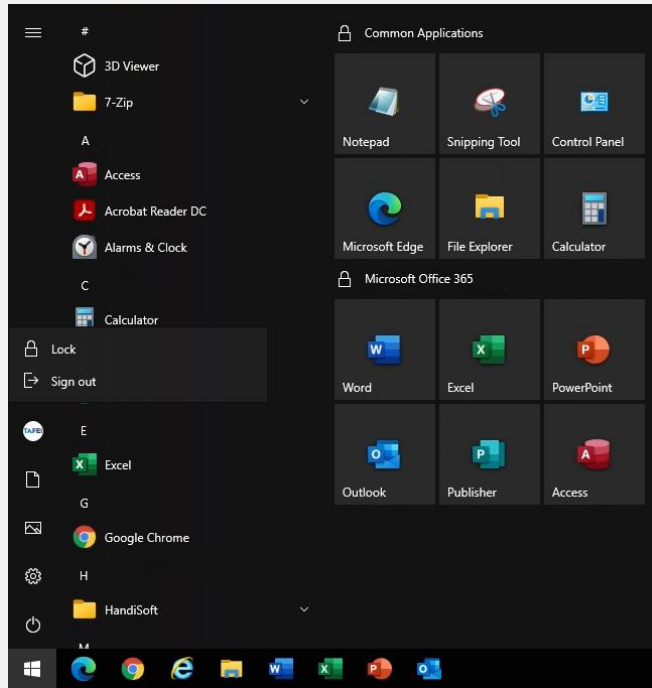




Once the login process has finished, the following screen will be displayed.



Remember to sign out when you are finished in the Student Virtual Desktop.



## To sign out:

1. Open the Start Menu from the bottom left corner
2. Click on the Profile icon
3. Click Sign out

## For More Information

A number of checklists and guides are available on the [TAFE Internet](#) to assist you in accessing the virtual classroom and related technologies.

If you are experiencing difficulties with installing or accessing the TAFE Virtual Desktop please call the TAFE NSW Student Technology Service Desk on 131 601 and follow the prompts.

Students who may be Deaf or hard of hearing, can seek assistance through the [National Relay Service](#) or may lodge an enquiry using the [Get Technology Help Form](#).